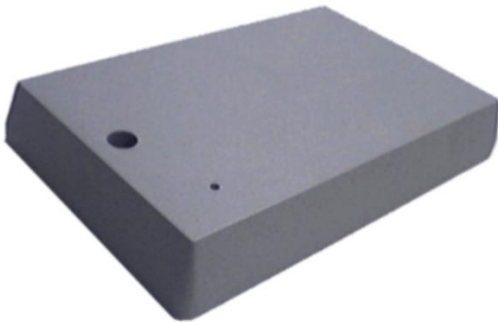


# Temperature and Humidity Control

## CimTrace 100

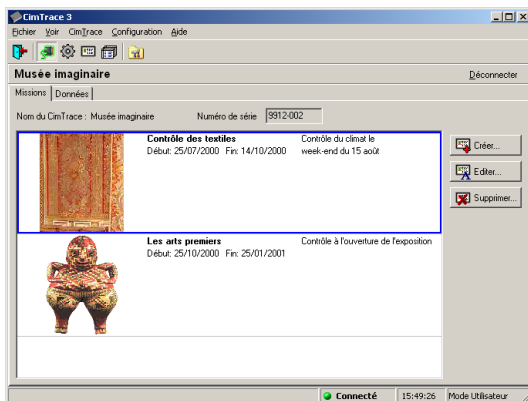
*Stand alone system to measure, control, record and monitor climate environment. Genuine tracking tool, it has been specially studied and designed to fulfill conservation needs.*

*It can be used in a fixed position or to track door to door environmental conditions during travel.*



### Characteristics

- Autonomous and stand alone module, logging digital data.
- 2 sensors : One temperature and one relative humidity
- Programmable sampling pace from minute to minute, from 1mn to 100mn.
- Memory size : Greater than 50.000 dated sequences.
- Memory autonomy :
  - 5 weeks with a recording every minute.
  - 6 months with a recording every 5 minutes.
  - 6 years with a recording every hour.
- Very low consumption, its battery ensures an autonomy greater than 3 years.
- Size : 84mm \* 54mm (Credit card), H : 13mm.
- Weight : 60 grams.



	Temperature	Humidity
Measurement range	0 to 70°	0 to 100%
Precision	±0,5°	±3%
Definition	0,5°	0,5%

### Data processing

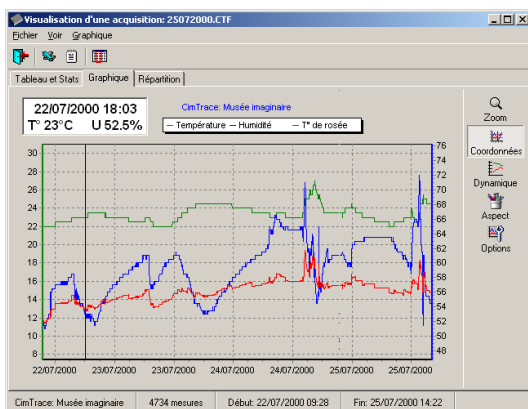
Data recorded in CimTrace 100 are high speed transferred and recorded into the computer memory through an integrated serie interface. An intermediate connector allows data transfer without interfering with a controlled atmosphere.

### Software Uses a maximum of safety and automatism

- Setting of logger parameters before turning it on (Identification, Sampling pace, Threshold values, Differed start, Event or Time driven recording method ..).
- Automatic Data transfer and recording from logger to PC.
- Smart files organization (Name-Mission-Date-Records).
- Data integrity : Non corruptible source files.
- The "vital" actions are password protected.
- Display of tables and graphs (Curves, Pie chart, Histogram).
- Selectable period of time and scale.
- Direct export toward Word processing, Worksheet, backup media, printer, Fax, e-mail....

### Services

- Warranty 1 year. Thereafter, fixing by element exchange.
- Selling price includes a sensors calibration certificate, a battery exchange and a re-calibration (return to lab).
- User help : On line help. Telephone support. e-mail, Web site



**CIMEL Electronique**

 **www.cimtrace.com**

172, rue de Charonne – 75011 PARIS – Tel. (+33) 1.43.48.79.33 – Fax (+33) 1.43.48.62.61