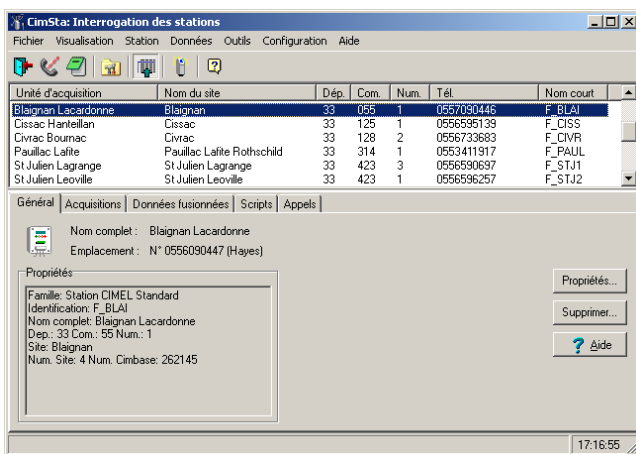


CimSta

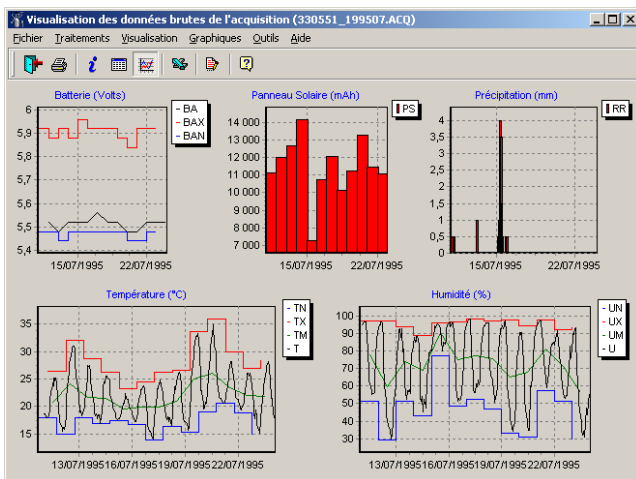
Exploitation software for ENERCO automatic weather stations operating over several transmission modes : RTC, GSM, RS-232 et Extended RS-232.

CimSta have got acquisition, remote maintenance, storing and climatic database management functions.

It's possible to visualize acquisition data with graphics and tables.



	TN	TX	TM	ITN	ITX	UN
01/07/95	19.8	26.5	22.0	04h00	12h42	58.0
02/07/95	17.3	24.7	20.1	05h12	13h18	59.5
03/07/95	15.4	21.3	17.7	02h12	13h06	52.0
04/07/95	13.7	23.6	18.1	02h48	15h06	50.5
05/07/95	14.4	25.2	18.9	01h48	14h30	49.5
06/07/95	13.1	27.8	20.0	04h36	14h54	32.0
07/07/95	14.0	29.4	21.6	03h54	16h12	36.0
08/07/95	15.0	33.1	24.9	04h18	15h30	28.5
09/07/95	20.9	33.6	26.5	04h30	15h06	26.5
10/07/95	21.0	29.2	23.4	04h00	13h24	45.0
11/07/95	17.9	26.4	20.7	06h06	13h30	51.5
12/07/95	15.0	32.0	24.1	04h36	16h36	29.0
13/07/95	18.0	28.7	21.6	03h48	12h42	51.5
14/07/95	16.8	26.3	21.5	04h54	11h42	43.0
15/07/95	17.4	23.3	19.6	04h12	14h30	77.5
16/07/95	16.7	24.4	19.8	03h24	15h00	48.5



- Use of powerful scripts for the data retrieval, the time setting, the remote maintenance, the Minitel mode, the instantaneous values, etc.
- Monthly data files organisation, automatic files fusion
- Supports hourly / daily data, minutes data and instantaneous values
- Future calls scheduling
- Precise historic and calls statistics
- Integrated Minitel Mode
- Edition, modification and printing of the parameters.
- Table and graphic visualization and printing
- 'S' files importation and exportation
- .ACQ files compatibility
- Complete on-line help
- Free software upgrade on Internet

Windows 95/98, Windows NT 4 and Windows 2000 Compatible



CIMEL Electronique

 www.cimel.fr

172, rue de Charonne – 75011 PARIS – Tel. (33) 143.487.933 – Fax (33) 143.486.261