

# Automatic Aerosol Monitoring Solutions



## AAMS - Air Quality

Natural & Anthropogenic atmospheric pollution

CE318-T  
iAAMS  
CE376

Scan to see the datasheets



✉ [sales@cimel.fr](mailto:sales@cimel.fr)



EXPLORE THE CLIMATE



**LOA**

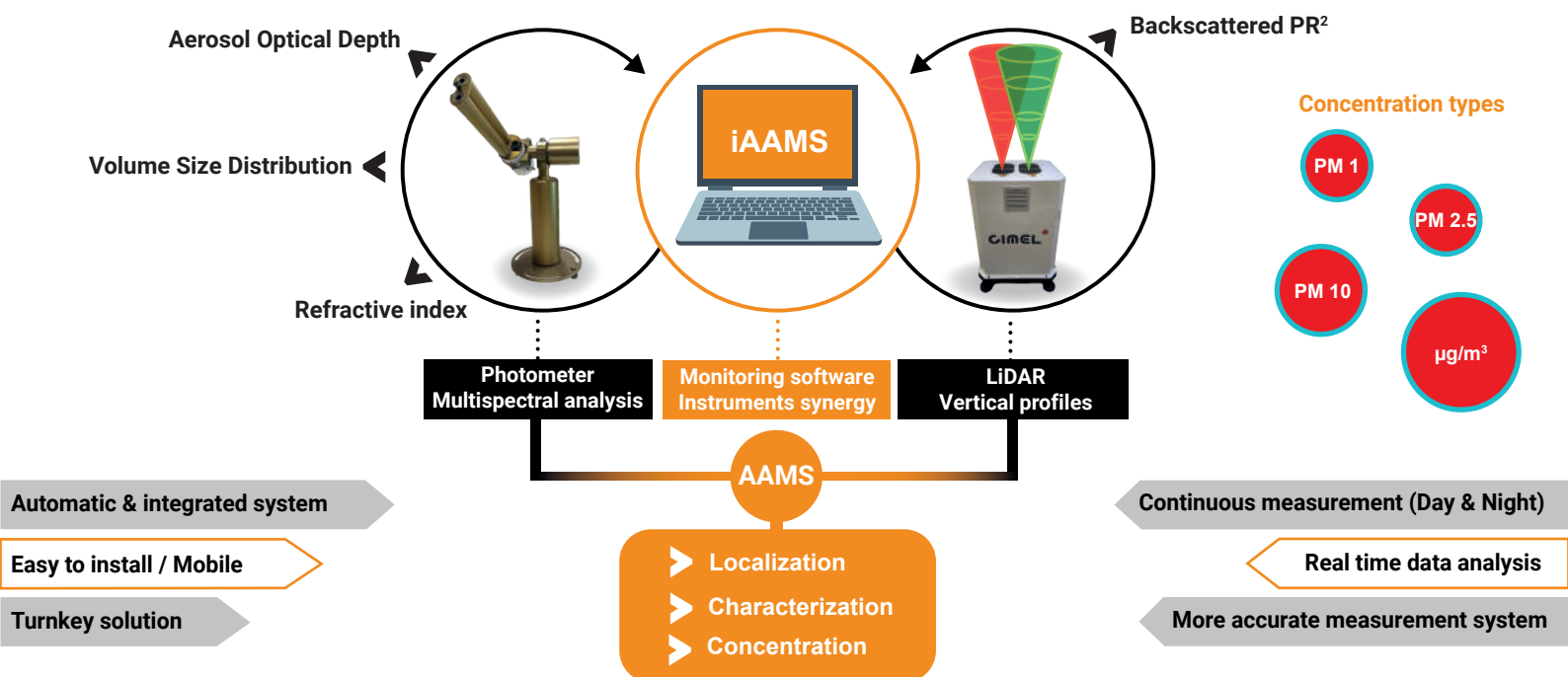
LABORATOIRE D'OPTIQUE  
ATMOSPHÉRIQUE



## SYNERGY BETWEEN CIMEL INSTRUMENTS

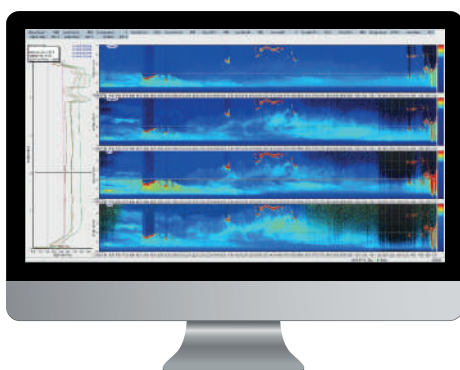
The effects of atmospheric aerosols at global scale on climate change and environmental evolution are critical for coming generations and the future of our planet.

Cimel provides instrument synergies between Photometers and LiDARs through a unique monitoring software iAAMS, dedicated to the aerosols study and analysis. The obtained parameters are the characterization of aerosol types, the extinction and backscatter profiles, and the vertical profile of mass concentration.



## HOW DOES IT WORK?

Cimel's AAMS is able to automatically locate, identify and quantify aerosols, layer by layer, day and night.

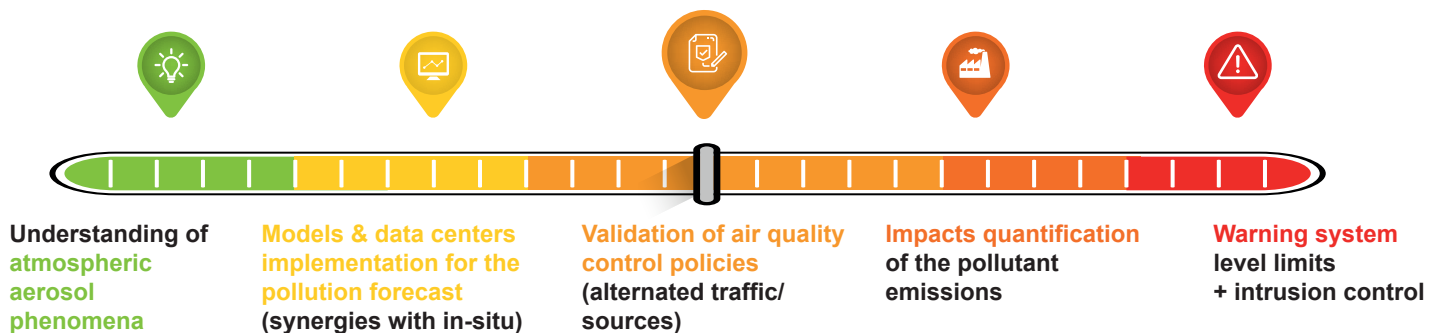
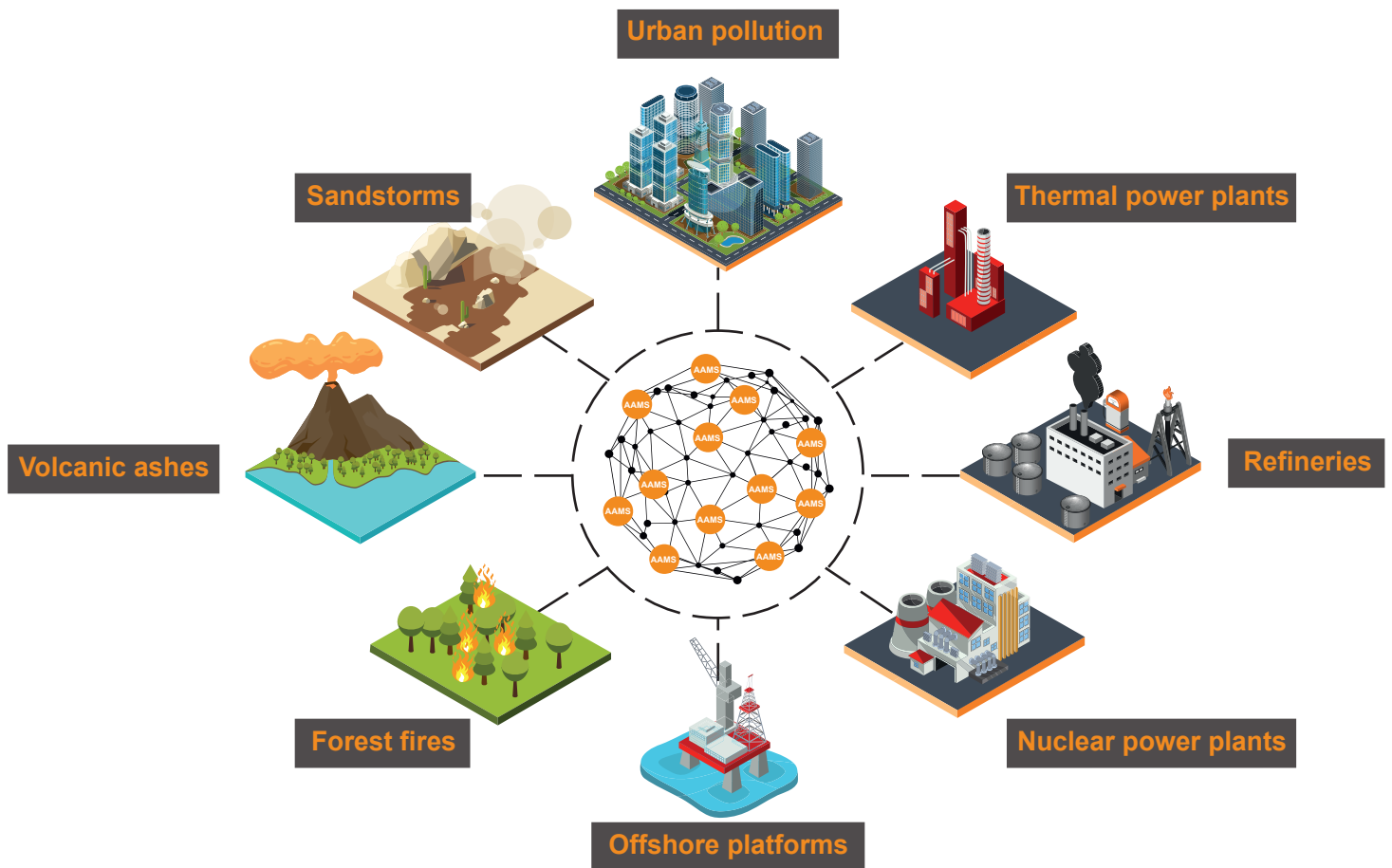


### Our monitoring software **iAAMS**

#### Integrated Automatic Aerosol Monitoring Software

- ✓ Compatible with CE376, CE370 LiDAR & CE318-T photometers
- ✓ Data exportation (NASA - AERONET compatible)
- ✓ Data processing through complex algorithms
- ✓ Dashboard & processing customization
- ✓ Flexible network management

# APPLICATIONS - AIR QUALITY



## Efficient

- High altitude detection profiles
- Automatic detection of multiple boundary layers + PBL
- Automatic calibration
- High metrological stability

## Operational

- Robust and climate resistant
- Light and portable (M-AAMS vehicle integration)
- Eye safe (compliant with EN-60825 / ANSI Z136)
- Single or multi-users with real time processing display

## Cost saving

- Unattended continuous operation
- Full outdoor installation
- Low maintenance
- Compact and disruptive solution (industrialized)

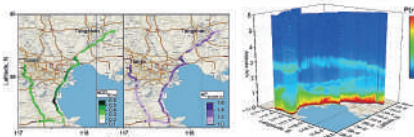




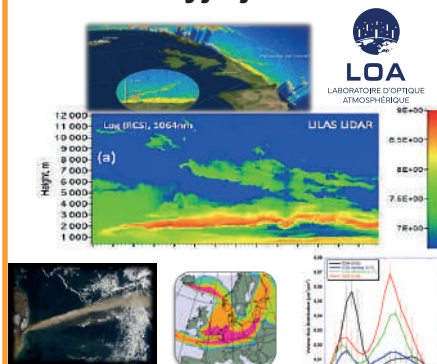
Combining technology and science, CIMEL develops reference optical remote sensing instruments to monitor the atmosphere, land and oceans, contributing to a deeper understanding of the Earth system and helping human activities adapt to the environment

## OUR REFERENCES

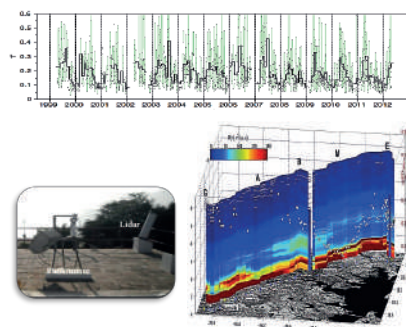
### Mobile AAMS (M-AAMS)



### LOA / Eyjafjöll Volcano



### Fixed AAMS platform M'bour SENEGAL



ADEME



Agence de l'Environnement  
et de la Maîtrise de l'Energie



Scan to see the datasheets



172 rue de Charonne, 75011 PARIS

Phone: +33 (0)1 43 48 79 33

Email: [sales@cimel.fr](mailto:sales@cimel.fr)

[www.cimel.fr](http://www.cimel.fr)

[sales@cimel.fr](mailto:sales@cimel.fr)